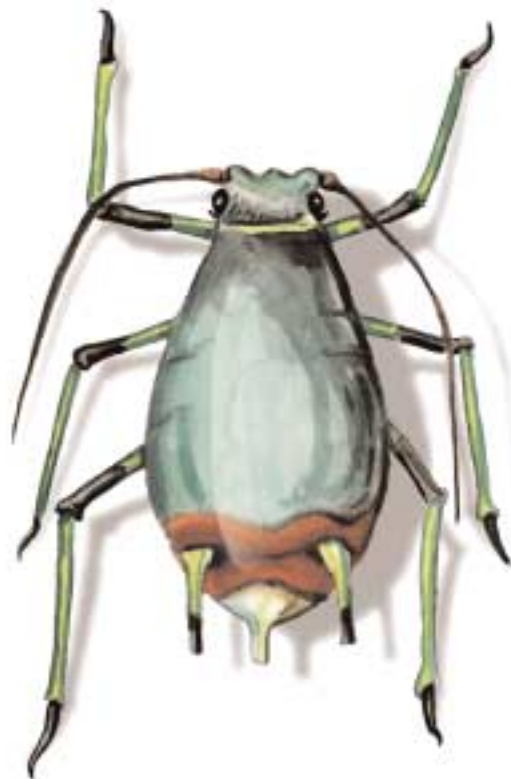

APPENDIX: APHIDS IN MISSOURI WHEAT



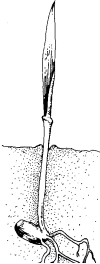


Left: Corn leaf aphid.
Right: English grain aphid.




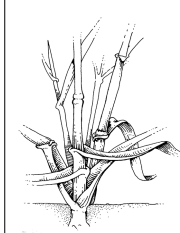
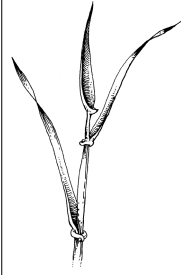


Left: Bird cherry-oat aphid.
Right: Greenbug.



Soft red winter wheat integrated crop and pest management schedule

	Pre-plant	One-leaf	Fall tillering	Winter dormancy
				
Month	Sept. to Oct.	October	Nov. to Dec.	Jan. to Feb.
Crop management	Germination test	Planting		Spring nitrogen
	Assess seed quality			
	Soil test			
	Fall fertility			
	Seedbed preparation			
Insect management		Aphid complex		
		Wheat curl mite		
		Hessian fly adult	Hessian fly larvae	
Disease management		Seedling blights		
	Seed treatment fungicide (check)			
		Evaluate stand		
			Scout for barley yellow dwarf	
	Select resistant varieties			
Weed management		Winter annual weeds		

Soft red winter wheat integrated crop and pest management schedule

Spring tillering	Jointing	Boot	Anthesis	Harvest	
					
Feb. to March	March to April	April	April to May	June to July	Month
Spring nitrogen				Harvest	Crop management
Aphid complex					Insect mangement
Cereal leaf beetle adults			Cereal leaf beetle overwintering adults		
Cereal leaf beetle larvae					
True armyworm moths (egg laying)					
	True armyworm larvae (foliage & head clipping)				
Wheat curl mite					
Hessian fly adult	Hessian fly larvae	Hessian fly adult			Disease management
Scout for barley yellow dwarf			Scout for wheat streak mosaic		
Scout for wheat spindle streak mosaic			Scout for take-all		
Scout for wheat soilborne mosaic			Scout for scab & other head disease		
	Scout for foliage diseases				
Winter annual weeds					Weed management
	Scout for summer annual weeds				



OUTREACH & EXTENSION
UNIVERSITY OF MISSOURI
COLUMBIA

■ Issued in furtherance of Cooperative Extension Work Acts of May 8 and June 30, 1914, in cooperation with the United States Department of Agriculture. Ronald J. Turner, Director, Cooperative Extension, University of Missouri and Lincoln University, Columbia, MO 65211. ■ University Outreach and Extension does not discriminate on the basis of race, color, national origin, sex, religion, age, disability or status as a Vietnam era veteran in employment or programs. ■ If you have special needs as addressed by the Americans with Disabilities Act and need this publication in an alternative format, write ADA Officer, Extension and Agricultural Information, 1-98 Agriculture Building, Columbia, MO 65211, or call (573) 882-7216. Reasonable efforts will be made to accommodate your special needs.